

* Select and write one most appropriate option out of the four options given for each of the questions [44]

1. Mountains can be recognised by

- (A) A steep slopes (B) A gentle slopes (C) Narrow slopes (D) None of these

Ans.: (A) A steep slopes

2. Highlands with a lower height, less steep slopes and rounded tops are called

- (A) Mountain (B) Valleys (C) Hills (D) Range

Ans. : (C) Hills

3. Mount Aconcagua is the highest peak of

- (A) Mount Blank (B) Aravalli hills (C) Andes (D) None of these

Ans. : (C) Andes

4. At higher attitudes the trees give way to

- (A) grasses (B) grasses, mosses and lichens
(C) Pines (D) none of these

Ans. : (B) grasses, mosses and lichens

5. _____ is the Indian name of the largest river originating in Himalayas.

- (A) Son (B) Ganga (C) Narmada (D) Yamuna

Ans. : (B) Ganga

6. African Plateau is famous for

- (A) gold, silver (B) gold, diamond (C) silver and brass (D) all of these

Ans. : (B) gold, diamond

7. Floodplains are one type of plains formed by

- (A) sea (B) rivers (C) lake (D) all of these

Ans. : (B) rivers

8. Plains also support a variety of _____ and _____.

- (A) animals (B) flora and fauna (C) plants (D) all of these

Ans. : (B) flora and fauna

9. The Himalayas are young mountains with peaks.

- (A) sharp (B) elliptical (C) spherical (D) all of these

Ans.: (A) sharp

10. The Andes Mountains are located in which continent?

- (A) South America (B) North America (C) Europe (D) Australia



Ans.: (A) South America

11. _____ is the tallest in the world, attracts climbers globally.

- (A) Mount Kilimanjaro (B) Mount Everest
(C) Mount Elbrus (D) Mount McKinley

Ans. : (B) Mount Everest

12. Which highland, referred to as the 'Roof of the World,' influences the climate of Asia?

- (A) Deccan Plateau (B) Patagonian Plateau
(C) Tibetan Plateau (D) East African Plateau

Ans. : (C) Tibetan Plateau

13. About 40 crore people of the total population of India live in the plains of. _____

- (A) Nile (B) Amazon (C) Ganga (D) Mississippi

Ans. : (C) Ganga

14. Which desert is known for its vibrant cultural practices, including folk songs and legends in India?

- (A) Sahara Desert (B) Thar Desert (C) Gobi Desert (D) Arabian Desert

Ans. : (B) Thar Desert

15. Which famous waterfall, located on the Zambezi river, is known for its scenic beauty?

- (A) Hundru Falls (B) Victoria Falls (C) Jog Falls (D) Nohkalikai Falls

Ans. : (B) Victoria Falls

16. Which plateau in India is known for its fertile black soil and volcanic origin?

- (A) Chhota Nagpur Plateau (B) Deccan Plateau
(C) East African Plateau (D) Patagonian Plateau

Ans. : (B) Deccan Plateau

17. Mountains are considered sacred in many traditions. Which mountain is considered holy by Hindus and Buddhists?

- (A) Himalayas (B) Andes (C) Rockies (D) Mount Kailash

Ans. : (D) Mount Kailash

18. There are two types of deserts namely, hot and cold. Which of the following is an example of the cold desert?

- (A) Sahara Desert (B) Thar Desert (C) Gobi Desert (D) Arabian Desert

Ans. : (C) Gobi Desert

19. In ancient Tamil Sangam poetry which landform is associated with cattle rearing?

(A) Kurinji (B) Mullai (C) Marudam (D) Neydal

Ans. : (B) Mullai

20. Which region in India is home to the famous Hundru Falls?

(A) Western Ghats (B) Cherrapunji Plateau
(C) Chhota Nagpur Plateau (D) Patagonian Plateau

Ans. : (B) Cherrapunji Plateau

21. _____ are most suitable for large-scale agriculture due to its fertile soil.

(A) Mountains (B) Plateaus (C) Plains (D) Deserts

Ans. : (C) Plains

22. This elevated landform is often rich in mineral resources and supports mining. Identify the land form.

(A) Mountains (B) Plateaus (C) Plains (D) Deserts

Ans. : (B) Plateaus

23. Arrange the following mountains according to their heights from smaller to larger.

I. Mount Everest

II. Mount Aconcagua

III. Mount Kilimanjaro

IV. Mont Blanc

(A) II, I, III, IV (B) II, III, I, IV (C) IV, I, II, III (D) IV, III, II, I

Ans. : (D) IV, III, II, I

24. Which of the following statements is/are incorrect?

I. South America has the Andes mountains.

II. Africa has Ural mountains.

III. Ural mountain divides Europe and Africa.

(A) Only I (B) Both I and II (C) Only II and III (D) I, II and III

Ans. : (C) Only II and III

25. Assertion (A) Mountains with tall and sharp peaks are relatively 'young'.

Reason (R) These mountains were formed recently in the Earth's history.

(A) Both A and R are true and R is the correct explanation of A
(B) Both A and R are true, but R is not the correct explanation of A
(C) A is true, but R is false
(D) A is false, but R is true

Ans.: (A) Both A and R are true and R is the correct explanation of A

26. Assertion (A) The Deccan Plateau is one of the oldest plateaus in the world.

Reason (R) The Deccan Plateau was formed through volcanic activity millions of

years ago

- (A) Both A and R are true and R is the correct explanation of A
- (B) Both A and R are true, but R is not the correct explanation of A
- (C) A is true, but R is false
- (D) A is false, but R is true

Ans.: (A) Both A and R are true and R is the correct explanation of A

27. Assertion (A) Mount Kilimanjaro is part of a mountain range.

Reason (R) Mount Kilimanjaro is located in Eastern Africa.

- (A) Both A and R are true and R is the correct explanation of A
- (B) Both A and R are true, but R is not the correct explanation of A
- (C) A is true, but R is false
- (D) A is false, but R is true

Ans. : (D) A is false, but R is true

28. What are the three major landforms mentioned in the passage?

- (A) Mountains, plateaus, and deserts
- (B) Mountains, plateaus, and plains
- (C) Hills, valleys, and plains
- (D) Plateaus, deserts, and valleys

Ans. : (B) Mountains, plateaus, and plains

29. Which mountain is considered the highest peak of the Himalayan range?

- (A) Mount Kilimanjaro
- (B) Mount Aconcagua
- (C) Mount Everest
- (D) Anamudi

Ans. : (C) Mount Everest

30. What is terrace farming?

- (A) Farming on flat plains
- (B) Farming in valleys
- (C) Cultivation on slopes by cutting steps into the slope
- (D) Farming near rivers

Ans. : (C) Cultivation on slopes by cutting steps into the slope

31. Which plateau is known as the 'Roof of the World'?

- (A) Deccan Plateau
- (B) East African Plateau
- (C) Tibetan Plateau
- (D) Chhota Nagpur Plateau

Ans. : (C) Tibetan Plateau

32. What type of trees are common in montane forests?

- (A) Deciduous trees (B) Conifer trees (C) Tropical trees (D) Mangrove trees

Ans. : (B) Conifer trees

33. What does the term 'tainais' refer to in ancient Tamil Sangam poetry?

- (A) Different types of forests
(B) Different classifications of landforms
(C) Different landscapes associated with specific deities and emotions
(D) Different river systems

Ans. : (C) Different landscapes associated with specific deities and emotions

34. What is the primary occupation in the Ganga plain?

- (A) Mining (B) Tourism (C) Agriculture (D) Herding

Ans. : (C) Agriculture

35. What is Mount Kilimanjaro?

- (A) The highest mountain in Europe
(B) An isolated mountain in eastern Africa
(C) The highest peak of the Andes
(D) A mountain range in India

Ans. : (B) An isolated mountain in eastern Africa

36. Why is the Tibetan Plateau referred to as the 'Roof of the World'?

- (A) Because it is the highest plateau in the world
(B) Because it has many high mountains
(C) Because it has a lot of snow
(D) Because it is very cold

Ans.: (A) Because it is the highest plateau in the world

37. What is the main activity on plateaus rich in minerals?

- (A) Agriculture (B) Tourism (C) Mining (D) Fishing

Ans. : (C) Mining

38. A plant-like organism that generally clings to rocks, walls or tree.

- (A) Lichen (B) Moss (C) Cactus (D) Conifers

Ans. : A. Lichen

Explanation.

At higher altitudes, the trees give way to grasses, mosses and lichens.

39. Aravalli Ranges are much older and have been rounded by:

(A) Peaks

(B) Snow

(C) Erosion

(D) All of these

Ans. : C. Erosion

Explanation.

Aravalli Ranges are much older and have been rounded by erosion.

40. lies between Tibet (China) and Nepal.

(A) Mount Everest

(B) Kanchenjunga

(C) Anamudi

(D) Mount Aconcagua

Ans. : A. Mount Everest

Explanation.

Mount Everest lies between Tibet (China and Nepal).

41. Anamudi in Kerala, also known as _____.

(A) Ana Peak

(B) Mudi Peak

(C) Ani Peak

(D) Anai Peak

Ans. : D. Anai Peak

Explanation.

Anamudi (in Kerala, also known as Anai Peak') is the highest mountain in south India.

42. Rain, snow and hail are the most common forms of .

(A) precipitation

(B) evaporation

(C) condensation

(D) transpiration

Ans. : A. precipitation

Explanation.

Water from the atmosphere reaching the ground in any form rain, snow and hail are the most common forms of precipitation.

43. A type of forest that grows in mountainous regions is called .

(A) Deciduous forest

(B) Evergreen forest

(C) Montane forest

(D) Mangrove forest

Ans. : C. Montane forest

Explanation.

Mountain slopes are often covered with a type of forest called montane forest.

44. Skiing, hiking, mountaineering and paragliding are the examples of sports.

(A) mountain

(B) water

(C) desert

(D) beach

Ans. : A. mountain

Explanation.

The crisp mountain air and scenic beauty attract many tourists. Some tourists also go to the mountains for sports, such as skiing, hiking, mountaineering and paragliding.

* Assertion - Reasoning based questions.

[7]

45. Assertion (A): The Ganga plain is highly populated.

Reason (R): The Ganga plain has fertile soil ideal for agriculture.

(A) Both (A) and (R) are true and (R) is the correct explanation of (A).

(B) Both (A) and (R) are true but (R) is not the correct explanation of (A).

(C) (A) is correct but (R) is wrong.

(D) (A) is wrong but (R) is correct.

Ans.: (A) Both (A) and (R) are true and (R) is the correct explanation of (A).

46. Assertion (A): Terrace farming is commonly practiced in plains.

Reason (R): Plains have flat and fertile land suitable for large-scale farming.

(A) Both (A) and (R) are true and (R) is the correct explanation of (A).

(B) Both (A) and (R) are true but (R) is not the correct explanation of (A).

(C) (A) is correct but (R) is wrong.

(D) (A) is wrong but (R) is correct.

Ans. : (D) (A) is wrong but (R) is correct.

47. Assertion (A): The Tibetan Plateau is called the 'Roof of the World.'

Reason (R): It has an average altitude of 4,500 meters.

(A) Both (A) and (R) are true and (R) is the correct explanation of (A).

(B) Both (A) and (R) are true but (R) is not the correct explanation of (A).

(C) (A) is correct but (R) is wrong.

(D) (A) is wrong but (R) is correct.

Ans.: (A) Both (A) and (R) are true and (R) is the correct explanation of (A).

48. Assertion (A): Montane forests are found at lower altitudes.

Reason (R): Montane forests are home to conifer trees.

(A) Both (A) and (R) are true and (R) is the correct explanation of (A).

(B) Both (A) and (R) are true but (R) is not the correct explanation of (A).

(C) (A) is correct but (R) is wrong.

(D) (A) is wrong but (R) is correct.

Ans. : (D) (A) is wrong but (R) is correct.

49. Assertion: Mountain regions are thinly populated.

Reason: Mountains have a rugged terrain and harsh climate.

(A) Both (A) and (R) are true and (R) is the correct explanation of (A).

(B) Both (A) and (R) are true but (R) is not the correct explanation of (A).

(C) (A) is correct but (R) is wrong.

(D) (A) is wrong but (R) is correct.

Ans. : (C) (A) is correct but (R) is wrong.



50. Assertion: The mountain terrain is usually rugged or rough, and has steep slopes.

Reason: In many mountainous regions of the world, herding is the preferred occupation over agriculture.

(A) Both Assertion (A) and Reason (R) are true, and Reason (R) is the correct explanation of Assertion (A).

(B) Both Assertion (A) and Reason (R) are true, but Reason (R) is not the correct explanation of Assertion (A).

(C) Assertion (A) is true, but Reason (R) is false.

(D) Assertion (A) is false, but Reason (R) is true.

Ans. : A. Both Assertion (A) and Reason (R) are true, and Reason (R) is the correct explanation of Assertion (A).

Explanation.

As conditions are not favourable for agricultural activities.

51. Assertion: A plateau is a landform that rises up from the surrounding land and has a more or less flat surface; some of its sides are often steep slopes.

Reason: The height of plateaus can vary from a few hundred metres to several thousand metres.

(A) Both Assertion (A) and Reason (R) are true, and Reason (R) is the correct explanation of Assertion (A).

(B) Both Assertion (A) and Reason (R) are true, but Reason (R) is not the correct explanation of Assertion (A).

(C) Assertion (A) is true, but Reason (R) is false.

(D) Assertion (A) is false, but Reason (R) is true.

Ans. : A. Both Assertion (A) and Reason (R) are true, and Reason (R) is the correct explanation of Assertion (A).

Explanation.

Plateaus height can vary as some sides are often steep sides.

* Fill in the blank with correct answer.[1 Mark each]

[22]

52. _____ farming is practised on the slopes of mountains by cutting steps into the slope.

Ans. : Terrace

53. The river _____ originates in the Himalayas and is considered the largest river in India

Ans. : Ganga

54. The _____ are a range of young fold mountains that stretch across the North-Eastern states of India.

Ans. : Purvanchal Hills

55. _____ is the largest delta in the world, formed by the confluence of the Ganges and Brahmaputra rivers.

Ans. : Sundarbans

56. The _____ river basin is known for its extensive alluvial deposits and rich agricultural land.

Ans. : Indo-Gangetic

57. _____ are broad, flat valleys formed due to the down-cutting of rivers over millions of years.

Ans. : Plains

58. The _____ plateau is known for its rich deposits of minerals such as iron ore and coal.

Ans. : Chhota Nagpur

59. A landform is a physical feature on the surface of our planet _____.

Ans. : Earth

60. The highest peak of the Himalayan range is _____.

Ans. : Mouth Everest

61. The Deccan Plateau is formed through _____ activity millions of years ago.

Ans. : volcanic

62. Terrace farming is practised by cutting _____ into the slope.

Ans. : steps

63. The _____ is known as the 'Roof of the World.'

Ans. : Tibetan Plateau

64. The Ganga plain is often called the _____ plain.

Ans. : Gangetic

65. The mountain slopes are often covered with _____ forests.

Ans. : montane

66. _____ is considered the highest peak of the Andes.

Ans. : Mount Aconcagua

67. The _____ Plateau is famous for gold and diamond mining.

Ans. : East African

68. _____ farming is a type of farming practised in some valleys of mountainous regions.

Ans. : Regular

69. Many plateaus have a _____ soil, which makes them less fertile than plains.

Ans. : rocky

70. The _____ of central and south India is one of the oldest plateaus in the world.

Ans. : Deccan Plateau

71. Sagarmatha', meaning _____.

Ans. : Goddess of the Sky

72. A sudden violent rainstorm is called _____.

Ans. : cloudburst

73. A lower area between hills or mountains, often with a river or stream flowing through it. _____.

Ans. : valley

*** State if the following are true or false.[1 Mark each]**

[32]

74. The Aravalli Range is an example of a relatively young mountain range.

Ans. : false

75. Mount Everest is the highest mountain in the world, located between Tibet and Nepal.

Ans. : true

76. The Deccan Plateau is rich in mineral deposits, making mining a major activity in the region.

Ans. : true

77. The highest mountain peak in the world is Mount K2.

Ans. : false

78. The Western Ghats and the Eastern Ghats are mountain ranges that run parallel to the coasts of India.

Ans. : true

79. Plains are characterised by high elevation and rugged terrain.

Ans. : false

80. The Indo-Gangetic plains are some of the most fertile lands in the world.

Ans. : true

81. The Deccan Plateau is bordered by the Western Ghats on the West and the Eastern Ghats on the East.

Ans. : true

82. The Himalayas are young mountains with rounded tops.

Ans. : False



83. Plateaus usually rise sharply at least on one side.

Ans. : true

84. Mountains and hills belong to the same type of landform.

Ans. : True

85. Mountains, plateaus and rivers in India have the same types of flora and fauna.

Ans. : False

86. Ganga is a tributary to the Yamuna.

Ans. : False

87. Deserts have unique flora and fauna.

Ans. : True

88. Melting snow feeds rivers.

Ans. : True

89. Sediments from rivers deposited in the plains make the land fertile.

Ans. : True

90. All deserts are hot.

Ans. : False

91. Mountains are landforms that are lower than the surrounding landscape

Ans. : false

92. Plateaus have a more or less flat surface.

Ans. : true

93. The Himalayas are still growing in height.

Ans. : true

94. The Deccan Plateau is located in eastern Africa.

Ans. : false

95. Conifer trees have thin, pointed leaves.

Ans. : true

96. The Ganges River is the Indian name for the Yamuna.

Ans. : false

97. Montane forests are found at higher altitudes.

Ans. : true

98. The Tibetan Plateau has an average altitude of 2,500 meters.

Ans. : false

99. The Nohkalikai Falls are located in the Deccan Plateau.

Ans. : false

100. The term 'tinai' refers to ancient Tamil Sangam poetry.

Ans. : true

101. The diverse ways in which humans have made all landforms their home is a testimony to our adaptability and resilience.

Ans. : true

102. Each landform offers different challenges as well as opportunities.

Ans. : true

103. The meeting point of two or more rivers is called confluence.

Ans. : true

104. Sediments are carried all the way to the plains where the rivers deposit them, making the soil very fertile.

Ans. : true

105. Huge reserves of iron, coal and manganese are found in the African Plateau.

Ans. : false

*** Answer the questions.[1 Mark each]**

[23]

106. Tibetan Plateau is known as the 'Roof of the World'. Why?

Ans. : The Tibetan Plateau, known as the 'Roof of the World', is the largest and highest plateau with an average altitude of 4,500 meters. It influences the climate of Asia and is home to unique biodiversity and cultural heritage.

107. Plateaus are sometimes referred to as "storehouses of minerals." Why?

Ans. : Plateaus are sometimes referred to as 'storehouses of minerals' because

- They are rich in mineral deposits.
- The world's largest mines are found on the plateaus.

108. How do mountains contribute to river formation? How does it impact the fertility of floodplains?

Ans. : Mountains contribute to river formation through the melting of snow and glaciers, which provides a continuous source of water that flows down the slopes, forming rivers. Formation of rivers make the floodplains highly fertile because rivers deposit nutrient-rich sediments during floods, creating ideal conditions for agriculture and supporting diverse ecosystems.

109. Write short notes on Plains.

Ans. : Plains are landforms that have an extensive flat or gently undulating surface. Thousand of years ago, the first civilisation developed around rivers in fertile plains.

110. Define plateau and give its importance.

Ans. : A plateau is a landform that rises up from the surrounding land and has a more or less flat surface. Importance: Plateaus are rich in mineral deposits. They have been called the store houses of minerals.

111. Into how many categories are landforms classified?

Ans. : The landforms are classified into three categories.

1. Mountains
2. Plateaus
3. Plains

112. Name the two highest peaks of the Himalayan range.

Ans. : Mount Everest and Kanchenjunga.

113. Name the mountain that is not the part of any range.

Ans. : Mount Kilimanjaro in eastern Africa is an isolated mountain that is not the part of any range.

114. Name three types of landforms.

Ans. : Mountains, Plateaus and Plains.

115. Name the highest mountain in South India.

Ans. : Anamudi (in Kerala, also known as 'Anai Peak') is the highest peak in South India.

116. Name one hottest desert in Africa.

Ans. : The Sahara Desert.

117. Which rock is found in layers?

Ans. : Sedimentary rock.

118. Why is terrace farming practiced in mountainous regions?

Ans. : Terrace farming is practiced in mountainous regions due to the steep slopes of hills and mountains.

119. Excessive tourism is a concern for mountain environments. How?

Ans. : The excessive tourism might be a concern for mountain environments due to the fragile nature of the mountains and increased pollution due to tourism.

120. How do plateaus differ from plains in terms of their surface features?

Ans. : The plateaus differ from plains in terms of their surface features as plateaus have at least one side with a steep slope, while plains are vast undulating land.

121. What makes floodplains ideal for agriculture?

Ans. : Floodplains are ideal for agriculture because they are fertile due to the sediments deposited by the rivers.

122. How has the Ganga river influenced cultural practices in India?



Ans. : The river Ganga is considered sacred and hence several festivals and cultural activities revolve around the river and places associated with it.

123. Early civilisations often located near rivers in plains. Why?

Ans. : Early civilisations were often located near the river in plains because it is a fertile region and supports various crop cultivation.

124. Increased irrigation poses for agriculture in the Gangetic plains. How?

Ans. : Increased irrigation facilities have boosted agriculture in Gangetic plains, but in the near future, it will lead to depletion in groundwater sources.

125. What evidence suggests mountains held spiritual significance in many cultures?

Ans. : The following evidence suggests mountains hold a spiritual significance in many cultures

- Mount Everest is the highest mountain in the world at 8,849 m. It is known by many names. Tibetans name it 'Chomolungma', which means 'Mother Goddess of the World', Nepalis call it 'Sagarmatha', meaning 'Goddess of the Sky'. Thus, it is worshiped by Tibetans and Nepalis.
- Mount Kailash in Tibet is held sacred by followers of Hinduism, Buddhism, Jainism and Bon.

126. What distinguishes cold deserts from hot deserts?

Ans. : The cold and hot deserts can be distinguished based on the temperature.

127. What is Snow?

Ans. : Snow is the precipitation of water in a solid state.

128. Why is Ganga mentioned?

Ans. : Ganga is the sacred river of Hindus and personified as the Goddess Ganga. She is worshipped by, Hindus who believe that bathing in the river causes the remission of sins.

*** very short answer questions. [2 Mark each]**

[38]

129. Human adaptation and resilience are represented by* various ways in which people settle in different ways. How?

Ans. : Human adapt and become resilient to challenges in various landforms in the following ways

- (a) Mountains Mountains do not support agriculture at large scale. But humans have adapted the method of terrace farming. To reduce the risk of damage from snow, houses in mountains have slanting roofs.
- (b) Plains Most of the plains are densely populated and face issues like pollution. Traditionally agriculture was rainfed but new irrigation facilities are developed to reduce dependence on rainfall.
- (c) Plateaus Plateaus are not very fertile landforms. People living in plateau regions



are engaged in mining activities as plateaus are a storehouse of minerals.

(d) Deserts People living in deserts are mostly migration tribes, they move from one place to another in search of water and other resources.

130. What are the main types of landforms, and how do they differ from each other?

Ans. : The main types of landforms are mountains, plateaus and plains. Mountains are elevated areas with steep slopes. They are generally part of ranges like the Himalayas or the Andes.

Plateaus are elevated flatlands with steep sides. They are rich in minerals. Most of the plateaus are formed by volcanic activity or tectonic movements.

Plains are flat or gently undulating landforms. The plains formed by river deposits are fertile and suitable for agriculture. All these landforms are different in their formation processes, elevation, and suitability for various human activities.

131. Give an overview of the cultural and economic significance of the Thar Desert.

Ans. : The Thar Desert, located in North-West India, has a unique cultural and economic significance.

Culturally, it is home to rich traditions, including folk songs and legends.

They reflect the life and struggles of people living in deserts. Economically, the Thar Desert supports activities such as animal husbandry. Drought-resistant crops such as millet, sorghum and pulses are also grown. Irrigation methods, like rainwater harvesting and drip irrigation, are used to increase crop yields. The resilience of the people living in this harsh environment is evident in their ability to sustain and develop their livelihoods despite the challenging conditions. This adaptability highlights the interdependence between humans and their environment.

132. What is terrace farming and why is it practised in mountainous regions?

Ans. : Terrace farming is the form of agriculture seen in mountainous regions. In terrace farming, slopes of the mountains are made flat by cutting them. This type of farming is common in North-East India to grow tea leaves.

It is practiced in mountainous regions to prevent soil erosion and water runoff, which are major concerns in hilly areas. The mountain is made into steps that slows down the speed of rainwater preventing the damage to the crops.

133. What are the major types of landforms and their significance to life and culture?

Ans. : The major types of landforms are mountains, plateaus, and plains. Their significance to life and culture is as follows

- Mountains offer natural beauty and resources.
- Plateaus are rich in minerals.
- Plains provide fertile soil for agriculture, each supporting diverse human cultures and activities.

134. What are mountain forests, and where are they commonly found? What are common animals found there?



Ans. : Mountain forests are types of forests found in mountainous regions, characterised by coniferous trees like pines and firs. These forests are commonly found in the Himalayas and other high-altitude areas around the world. At higher altitudes only grasses, mosses and lichens are found.

Some typical animals found in mountain habitats are: the golden eagle, peregrine falcon, canadian lynx, snow leopard, ibex, Himalayan tahr, mountain hare, yak, grey fox and black bear.

135. Evaluate the challenges and opportunities presented by mountain regions for human settlement and development.

Ans. : Mountain regions present challenges for human settlement and development due to their rugged terrain, limited arable land, and harsh climatic conditions. However, they also offer opportunities such as tourism, due to their scenic beauty and adventure sports potential. Additionally, mountain regions are often rich in natural resources like minerals and forests.

136. Evaluate the impact of human activities on desert ecosystems and the measures needed to mitigate negative effects.

Ans. : Human activities such as overgrazing, deforestation, and unsustainable water use can lead to desertification, loss of biodiversity, and soil degradation. Mitigating these effects requires sustainable land management practices, such as controlled grazing, reforestation, and efficient water use. Conservation efforts to protect native species and restore degraded land are also essential.

137. Can you give examples of river sources or confluences from your region that are regarded sacred by any community?

Ans. : Following are some examples of places that are sacred because they are source of river or confluence of river:

- (a) **Gangotri** origin place of river Ganga
- (b) **Yamunotri** origin place of river Yamuna
- (c) **Allahabad** confluence of river Ganga, Yamuna and Saraswati
- (d) **Devprayag** confluence of river Alaknanda and Bhagirathi

138. Visit a nearby river and observe all activities there, whether economic or cultural. Note them down and discuss with your classmates.

Ans. : The common economic and cultural activities near rivers are as follows

- (a) Agriculture
- (b) Pilgrimages
- (c) Sacred celebrations
- (d) Industries

139. Name some popular tourist destinations in India and identify the category of landform they are associated with.

Ans. : Some popular tourist destinations in India and their landforms are as follows

- (a) Leh-cold desert
- (b) Mussoorie-mountains
- (c) Thar safari-hot desert
- (d) Kochi-sea coast
- (e) Varanasi-plains

140. In what type of landform is your town/village/city located? Which features mentioned in this chapter do you see around you?

Ans. : self

141. Let us go back to our initial trip from Chhota Nagpur to Prayagraj and Almora. Describe the three landforms you came across on the way.

Ans. : The three landforms from Chhota Nagpur to Prayagraj and Almora were plateaus, plains and mountains. These are described as follows

(a) **Plateaus** A plateau is a landform that rises from the surrounding land and has a more or less flat surface; some of its sides are often steep slopes. The height of plateaus can vary from a few hundred metres to several thousand metres.

(b) **Plains** Plains are landforms that have an extensive flat or gently undulating surface. They do not have any large hills or deep valleys. They are generally not more than 300 metres above sea level.

(c) **Mountains** Mountains are landforms that are much higher than the surrounding landscape. A broad base, steep slopes and a narrow summit can recognise them. Depending on their height, some mountains are covered with snow.

142. What are the 'western to the eastern oceans'? Can you locate them as well as the 'Lord of mountains'.

Ans. : 1. Oceans :

- Western Ocean : The Arabian Sea lies to the west of India.
- Eastern Ocean : The Bay of Bengal is to the east of India.

2. Mountains :

- Western India : The Western Ghats run along the western coast of India.
- Eastern India : The Eastern Ghats run along the eastern coast of India.
- Northern India : The Himalayas are in the northern part of India, forming a natural border with countries like Nepal and China.

143. As a class activity, form groups of four or five students and observe the school's surroundings. What kind of landscape do you see? Will the landscape change a few kilometres away? Or within some 50 kilometres? Compared with other groups.

Ans. : The following landscape can be observed in the surroundings

- (a) Plains

- (b) Plateaus
- (c) Mountains

Landscape may or may not be changed within 50 kilometres.

144. In the same groups, discuss a journey that any of you has made through a region of India. List the different landscapes seen on the way. Compare it with other groups.

Ans. : The following landscapes can be observed during the journey in India

- (a) Mountains
- (b) Plains
- (c) Plateaus
- (d) Deserts
- (e) Coastal region

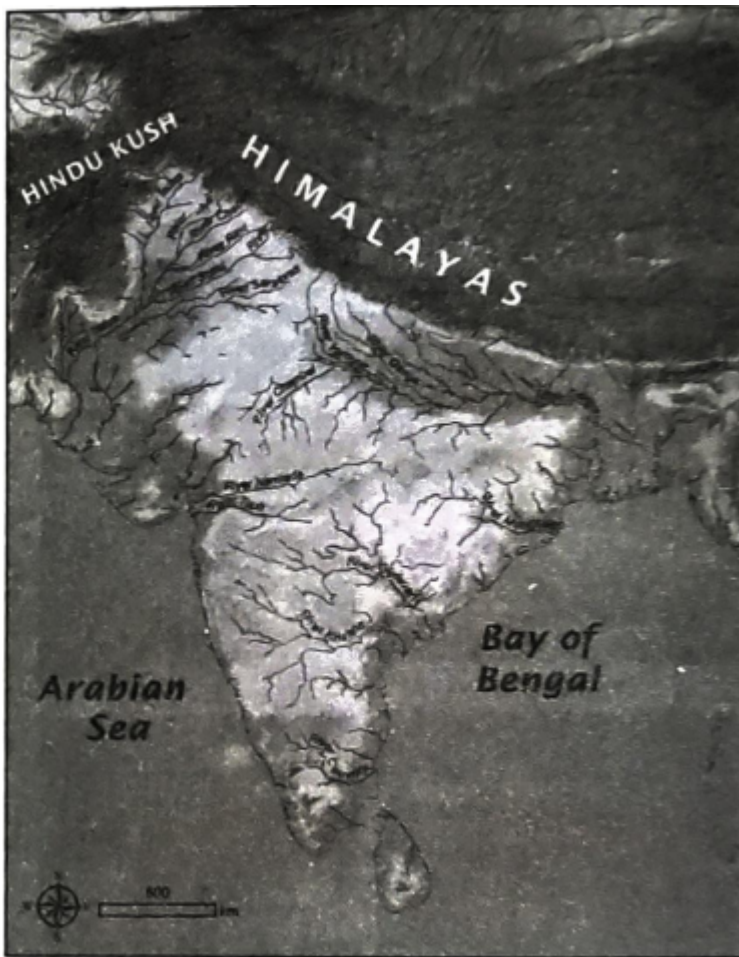
145. Here are two verses from a long poem by Kalidasa, who lived at least 1,500 years ago and is often considered to be the greatest poet of ancient India. The poem, Kumarasambhava, begins with an invocation to the Himalayas. (This is a simplified translation from Sanskrit.)

In the North rises Himalaya, the Lord of mountains, like a living god, who measures the Earth and stretches from the Western to the Eastern oceans. From it the wind comes down, carrying spray from descending Ganga, shaking the deodar trees, opening the peacocks' tail feathers and cooling the mountain people after they hunt deer. Discuss the verses and the following questions in class.

- (a) What are the 'Western to the Eastern oceans'? Can you locate them as well as the 'Lord of mountains' on given figure?

Student Bro





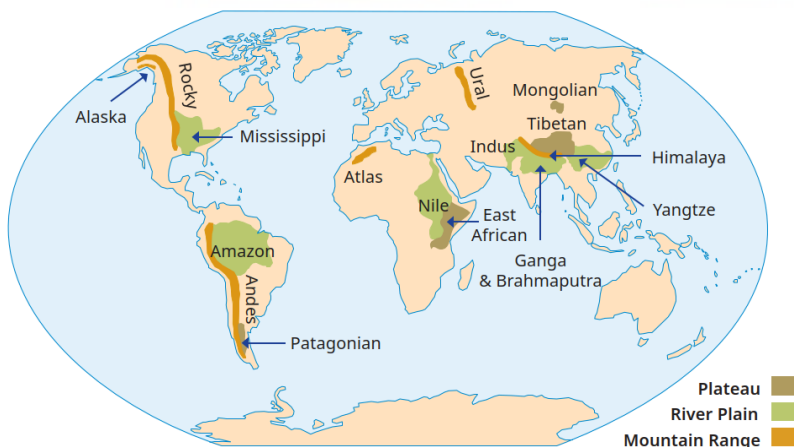
(b) Why is Ganga river mentioned?
 (Hint: There could be several reasons.)

Ans. : (a) The Western ocean is Arabian sea and Eastern ocean is Bay of Bengal.
 'Lord of mountains' is the Himalayas.

(b) Ganga river is mentioned because

- Most of the population lives in the Ganga plains.
- It is most important in terms of agriculture.
- It is the sacred river in India.

146. Use the colour code in the map given below to add a landform to each name. For instance, 'Tibetan Plateau', 'Rocky range', 'Nile plain'. (You do not have to remember the names in this map.)



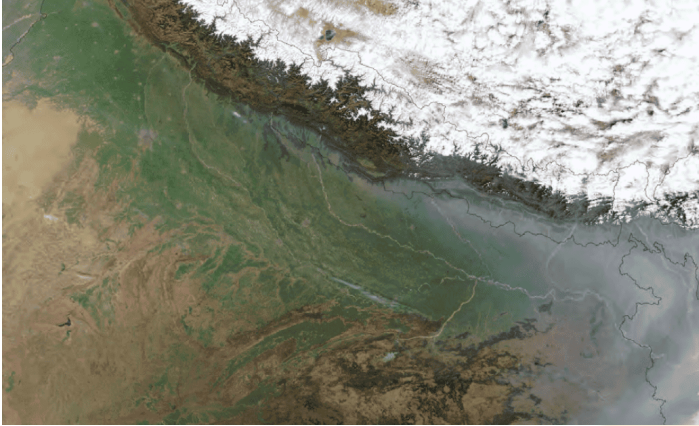
Ans. : self

147. The picture given below has been taken from a satellite. It captures a portion of North India from a high altitude. Observe and discuss the image as a class activity.

(a) Which colour is the Ganga plain?

(b) What does the white expanse represent?

(c) What does the brown expanse at the bottom left of the image represent?



Ans. : (a) The Ganga plain is represented through green colour.

(b) The white expanse represents the Himalayan range.

(c) The brown expanse in the bottom left corner represents the Deccan plateau.

*** Answer short answer questions. [3 Mark each]**

[24]

148. Read the following paragraph and answer the questions that follow.

Thousands of years ago, the first civilisations developed around rivers in fertile plains. In our times too, a large part of the world's population lives in plains. About 40 crore people, more than one-fourth of the total Indian population, live in India's Ganga plain (often called the 'Gangetic plain'). As with many other plains of the world, the major occupations of people in this region include river fishing and agriculture.

Food crops such as rice, wheat, maize, barley and millet are grown. Fibre crops such as cotton, jute and hemp are also grown in the Gangetic plain.

Traditional agriculture has been mostly rainfed (that is, watered through rainfall). In recent decades, however, agriculture has turned to irrigation, with water brought to the fields through networks of canals or pumped from groundwater. While irrigation has increased agricultural production, it has also contributed to the depletion (or decrease) of groundwater. This presents a challenge for the future of agriculture in the region.

Some of the other problems affecting the Ganga plains include high population and pollution. Whether in mountain ranges or plains, rivers around the world have carried immense cultural value. In particular, many communities have

considered a river's source and its confluence with one or two other rivers to be sacred. In India, numerous festivals, ceremonies and rituals are conducted at such locations.

Because plains have a gentle slope, river navigation is easy and supports a lot of economic activities. In earlier days, people also used rivers extensively to travel from one place to another.

- (i) Why did the first civilisations develop around rivers in fertile plains ?
- (ii) How has agriculture changed in the Gangetic plain in recent decades ?
- (iii) Why do rivers hold immense cultural value for many communities ?

Ans. : (i) The first civilisations developed around rivers in fertile plains because these areas were ideal for agriculture due to their fertile soil and availability of water.

(ii) Agriculture in the Gangetic plain has shifted from being mostly rainfed to relying on irrigation, with water brought to the fields through canals or pumped from groundwater.

(iii) Rivers hold immense cultural value because many communities consider a river's source and its confluence with other rivers to be sacred, and numerous festivals, ceremonies, and rituals are conducted at these locations.

149. What are the challenges and opportunities of life associated with each landform?

Ans. : The challenges and opportunities of life associated with each landforms are :

1. Mountains : Challenges mountains areas are more susceptible to natural hazards and disasters, such as avalanches, landslides debris flow and floods from landslide dams. Mountains are very steep and rugged, which can impact daily life agriculture also.

• Opportunities : Mountains are the store house of natural beauty. Soil is fertile.

2. Plateaus : Challenges plateau one of the main challenges of plateau is the outgoing erosion of their surface.

• The erosion can lead to a patchy land-scape which can hinder the development of agriculture and the construction of infrastructure like roads.

3. Plains : The plains are ideal for growing crops of all kinds. Agriculture is a major economic occupation in the landforms.

• Plain also support a variety of flora and fauna.

150. Describe the characteristics and significance of plateaus, with examples.

Ans. : The following are the characteristics and significance of plateaus

• Plateaus are elevated flatlands with one or more sides having steep slopes.

• Plateaus vary in height from a few hundred to several thousand meters. The Tibetan Plateau is the largest and highest in the world. Its average altitude is 4,500



meters. It is also known as the 'Roof of the World'.

- The Deccan Plateau in India, one of the oldest, was formed through volcanic activity millions of years ago.
- Plateaus are rich in minerals, making mining a major activity. For example, the East African Plateau is famous for gold and diamond mining, while the Chhota Nagpur Plateau in India has vast reserves of iron, coal, and manganese.

151. Explain the importance of plains for human habitation and agriculture.

Ans. : The plains are important for human habitation and agriculture because

- Plains are extensive flat or gently undulating areas, generally not more than 300 meters above sea level.
- Plains are formed by river deposits that create fertile soil ideal for agriculture.
- Floodplains, a type of plain, are created by sediments deposited by rivers originating in mountains.
- Plains are fertile areas that support intensive farming, which is a major economic activity.
- Plains also support diverse flora and fauna, and they have been home to many of the world's earliest civilisations.
- In India, the Ganga Plain supports over 40 crore people, showcasing its significance for human habitation and agricultural productivity.

152. What challenges do people face living in mountainous areas?

Ans. : The following challenges are faced by the people living in mountainous areas

- Flash Flood Flash flood is the sudden flood in a local region due to cloud burst. Sudden heavy rain can quickly turn mountain streams into dangerous floods. It can damage homes and roads.
- Landslide Soil and rocks sliding down slopes can destroy homes and block roads in mountain areas.
- Avalanches It is a landslide due to heavy snowfall. Large snow slides can damage villages and disrupt travel in snowy mountain regions.
- Heavy Snowfall Excessive snow can block roads, limit access, and cause damage to houses in mountain areas.
- Cloudburst Intense, short bursts of rain can lead to sudden floods and erosion in mountainous regions.

153. Imagine you are part of a community living near the Ganga Plain. Describe how the river influences your daily life and activities.

Ans. : Living near the Ganga plain, the river is a central part of our daily life and activities. We rely on it for freshwater, which is essential for drinking, cooking, and washing. The fertile soil along the riverbanks allows us to grow a variety of crops, such as rice, wheat, and vegetables, which are our main sources of food and income. Fishing in the river provides an additional food source and livelihood for many families. The river also holds cultural and religious importance; we conduct



rituals and celebrate festivals at the riverbanks, believing in its sacredness and purifying qualities. The Ganga is truly the lifeblood of our community, sustaining both our physical and spiritual needs.

154. List a few famous pilgrimage spots in India along with the land- forms in which they are found.

Ans. : Some of the famous pilgrimage site in India with their landforms type are as follows

- (a) Vaishno Devi: mountains
- (b) Amarnath Cave Temple: mountains
- (c) Gangotri Temple: mountains
- (d) Badrinath Temple: mountains
- (e) Rameswaram: coastal region
- (f) Tirupati: hills
- (g) Shirdi: plains
- (h) Haridwar: plains

155. What are the challenges and opportunities of life associated with each landform?

Ans. : The challenges and opportunities of life associated with each landform are :

1. Mountains : Mountain areas are more susceptible to natural hazards and disasters such as avalanches, landslides, cloudburst and flash floods. Mountains are very steep and negged, which can impact daily life agriculture also.

Opportunities: Mountains are the store house of natural beauty with fertile soil.

2. Plateaus : One of the main challenges of plateau is the outgoing erosion of their surface. This erosion can lead to a patchy landscape which can hinder the development of agriculture and the construction of infrastructure like roads.

3. Plains : The plains are ideal for growing crops of all kinds. Agriculture is a major economic occupation in the landforms. Plains also support a variety of flora and fauna.

* Long answer questions [4 Mark each]

[8]

156. Read the following paragraph and answer the questions that follow Mountains with tall and sharp peaks, like the Himalayas, are relatively 'young', which means that they were formed recently in the Earth's history-but that is still millions of years ago! Shorter and more rounded mountains and hills, like the Aravalli Range, are much older and have been rounded by erosion. Sometimes, as with the Himalayas, upliftment as well as erosion continue to this day.

(i) Himalayas are tall and have sharp peaks because they are _____.

- (a) ancient mountains
- (b) young mountains
- (c) eroded hills

(d) coastal ranges

(ii) The Aravalli Range is an example of old mountain because of _____.

(a) tall and sharp

(b) recently formed

(c) erosion

(d) continually uplifting

(iii) The statement "some mountains of the world, like the Himalayas, are still growing in height implies that these mountains are

(a) Eroding rapidly

(b) Forming new valleys

(c) Experiencing upliftment

(d) Located in coastal regions

(iv) The erosion affects the appearance of older mountain ranges like the Aravalli Range by

(a) making them taller

(b) sharpening their peaks

(c) making them shorter and more rounded

(d) adding volcanic features

Ans. : (i) young mountains

(ii) erosion

(iii) Experiencing upliftment

(iv) making them shorter and more rounded

157. What are the major types of landforms and their significance to life and culture?

Ans. : The major types of landforms are the mountains, the Plateaus and the Plains.

Mountains : Mountains are the landforms that are much higher than the surrounding landscape. Depending on their height, some mountains are covered with snow. At lower altitudes, the snow melts every summer and turns into water that feeds rivers. At high altitudes, the snow may never meet, leaving the mountain permanently snow-capped, mountains with tall and sharp peaks like the Himalayas, are relatively young which means that they were formed recently in the Earth's history but that is still millions of years ago. Shorted and more rounded mountains are much older and have been rounded by erosion.

Plateaus : A plateau is a landform that rises up from the surrounding land and has a more or less flat surface, some of its slides are often steep slopes. Tibetan Plateau is the largest and highest plateau in the world. The Deccan plateau is also another plateau in eastern part of India. Plateaus are the stone house of minerals. Mining is the major activity on plateaus where many of the worlds largest mines are found.

Plains : Plains are the landforms that have an extensive flat or gently undulating surface. They do not have any large hills. They are generally not more than 300 metres above the sea level. Significance of mountains, plateaus and plains in human life and culture.

Mountains : Mountain is a place of pure nature with very low pollution.

1. Terrace farming is practised on the slopes by cutting steps into the slope.
2. Tourism is often an important source of income for the people living in the mountains.
3. The crisp mountain air and scenic beauty attracts many tourists.

Plateaus : Plateaus have rich mineral deposits.

1. Many of the mining areas in the world are located in the plateau region.
 2. For e.g., the East African plateau is famous for Gold and Diamond mining.
 3. The Chhota Nagpur plateau in eastern India has huge reserves of Iron, Coal, etc.
 4. The Plateau Environment is very diverse across the world. Many plateaus have a rocky soil, which makes them less favourable for farming.
 5. Plateaus are the home to many spectacular water falls.
- Plains : Thousand of years ago, the first civilisations developed around rivers in fertile plains. In our times too, a large part of the worlds population lives in plains.

1. Plains in many areas are important for doing agriculture work on a large scale.
2. Plains have a gentle slope, river marigation is easy and supports a lot of economic activities.
3. Even today there are stretches along Ganga where people prefer to use boats to move around.

*** Long answer questions [5 Mark each]**

[10]

158. What are the major types of landforms and their significance to life and culture?

Ans. : The major types of landforms are the mountains, the plateaus and the plains.

- Mountains : Mountains are the land- forms that are much higher than the surrounding landscape. Depending on their height, some mountains are covered with snow. At lower altitudes, the snow melts eveiy summer and turns into water that feeds rivers. At high altitudes, the snow may never melt, leaving the mountain permanently snow-capped.
- Plateaus : A plateau is a land form that rises up from the surrounding land and has a more or less flat surface; some of its slides are often steep slopes. Tibetan Plateau is the largest and highest plateau in the world. Plateaus are the 'store house of minerals'. Mining is the major activity on plateaus where many of the world's largest mines are found.
- Plains : Plains are the landforms that have an extensive flat or gently undulating

surface. They don't have any large hills. They are generally not more than 300 metres above the sea level. Significance of mountains, plateaus and plains in human life and culture.

Mountains :

- Mountain regions has rich flora and fauna.
- Most of the mountain regions has almost very low pollution.
- Regular farming is practised on the slopes by cutting steps into the slope called terrace farming.
- Tourism is often an important source of income for the people living in the mountains.
- The crisp mountain air and scenic beauty attracts many tourists.

Plateaus :

- Plateaus have rich mineral deposits.
- Many of the mining areas in the world are located in the plateau regions.
- For e.g. the African plateau is famous for gold and diamond mining.
- The Chhota Nagpur plateau in India has huge reserves of Iron, Coal etc.
- The Plateau environment is very diverse across the world. Many Plateaus have a rocky soil, which makes them less favourable for farming.
- Plateaus are the home to many spectacular water falls.

Plains: Thousands of years ago, the first civilisations developed around rivers in fertile plains. In our times too, a large part of the world's population lives in plains. Most of the big cities around the world are based near the river bed.

- Plains in many areas are important for doing agriculture work on a large scale.
- Plains have a gentle slope, river navigation is easy and supports a lot of economic activities.
- Even today these are stretches along Ganga where people prefer to use boats to move around.

159. The images given below depict a few challenges that people living in the mountains may face. Discuss them in groups in the class and write one paragraph on each. Also discuss why, despite many such challenges, people still choose to

Student Bro



live in the mountains.



Ans. : The above given pictures depict the problems for people living in mountains. These are discussed below

(i) **Flash Flood** Flash flood is the sudden flood in a local region due to cloud burst. Sudden heavy rain can quickly turn mountain streams into dangerous floods. It can damage homes and roads.

(ii) **Uncontrolled Tourism** Too many visitors can put pressure on local resources and disturb mountain ecosystems, harming both the environment and local communities.

(iii) **Landslide** Soil and rocks sliding down slopes can destroy homes and block roads in mountain areas.

(iv) **Avalanches** It is a landslide due to heavy snowfall. Large snow slides can damage villages and disrupt travel in snowy mountain regions.

(v) **Heavy Snowfall** Excessive snow can block roads, limit access, and cause damage to houses in mountain areas.

(vi) **Cloudburst** Intense, short bursts of rain can lead to sudden floods and erosion in mountainous regions.

(vii) **Cold Weather** Extremely cold temperatures can make daily life and travel very difficult in the mountains.

People still prefer to live in mountainous regions because they are sacred to them. Mountains are a great source of tourism activity and many more natural resources.



India is a country of vast geographical expanse. In the north, it is bound by the lofty Himalayas. The Arabian Sea in the west, the Bay of Bengal in the east and the Indian Ocean in the south, wash the shores of the Indian peninsula. India has an area of about 3.28 million km. The north-south extent from Ladakh to Kanyakumari is about 3,200 km. And the east-west extent from Arunachal Pradesh to Kuchchh is about 2,900 km. The lofty mountains, the Great Indian Desert, the Northern Plains, the uneven plateau surface and the coasts and islands present a diversity of landforms. There is a great variety in the climate, vegetation, wildlife as well as in the language and culture. In this diversity, we find the unity that is reflected in traditions that bind us as one nation. India has a population of more than 120 crores since the year 2011. It is the second most populous country of the world after China. India is located in the Northern Hemisphere. The Tropic of Cancer ($23^{\circ}30'N$) passes almost halfway through the country. From south to north, main land of India extends between $8^{\circ}4'N$ and $37^{\circ}6'N$ latitudes. From west to east, India extends between $68^{\circ}7'E$ and $97^{\circ}25'E$ longitudes. If we divide the world into eastern and western hemispheres, which hemisphere would India belong to? Due to great longitudinal extent of about 29° , there could be wide differences in local time of places located at two extreme points of India. As such, the difference between these two points would be of about two hours. As you have learnt earlier, the local time changes by four minutes for every one degree of longitude. The Sun rises about two hours earlier in the east (Arunachal Pradesh) than in the west (Gujarat). You have already read earlier, why the local time of longitude of $82^{\circ}30'E$ has been taken as the Indian Standard Time. This meridian or longitude is also termed as the Standard Meridian of India.

Q.1. India has an area of:

- (a) 3.28 million sq.km. (b) 2.58 million sq.km.
(c) 1.32 million sq.km. (d) None of these

160. Which type of variety of landform is found in India?

- (a) Mountain (b) Desert (c) Plain and Plateau (d) All of these

161. India's vast varieties is/are:

- (a) Climate (b) Vegetation and wildlife
(c) Language and culture (d) All of the above

162. Which is the second most populous country of the world after China?

- (a) Australia (b) New Zealand (c) Sri Lanka (d) India

Ans. : 1.A. 3.28 million sq.km.

Explanation.

India spans around 3.28 million sq.km. About 3,200 miles stretch from Ladakh to Kanyakumari in a north-south direction. Additionally, Arunachal Pradesh to Kuchchh are almost 2,900 km away in an east-west direction.



2.D. All of these

Explanation.

A diversity of landforms can be found in the tall mountains, the Great Indian Desert, the Northern Plains, the uneven surface of plateaus, and the coasts and islands.

3.D. All of the above

Explanation.

The climate, plants, wildlife, language, and culture exhibit significant diversity. We find unity in this diversity which is mirrored in the customs that unite us as a one country.

4.D. India

Explanation.

Since 2011, the population of India has exceeded 120 crore. After China, it has the second- highest population in the world.

There are seven countries that share land boundaries with India. India shares its water borders with Sri Lanka and Maldives. Sri Lanka is separated from India by the Palk Strait. India is a vast country. For administrative purposes, the country is divided into 28 States and 8 Union Territories. Delhi is the national capital. The states have been formed mainly on the basis of languages. India is marked by a diversity of physical features such as mountains, plateaus, plains, coasts and islands. Standing as sentinels in the north are the lofty snow-capped Himalayas. Himalaya means The abode of snow⁷. The Himalayan mountains are divided into three main parallel ranges. The northernmost is the Great Himalaya or Himadri. The world's highest peaks are located in this range. Middle Himalaya or Himachal lies to the south of Himadri. Many popular hill stations are situated here. The Shiwalik is the southernmost range. The Northern Indian plains lie to the south of the Himalayas. They are generally level and flat. These are formed by the alluvial deposits laid down by the rivers- the Indus, the Ganga, the Brahmaputra and their tributaries. These river plains provide fertile land for cultivation. That is the reason for a high concentration of population in these plains. In the western part of India lies the Great Indian desert. It is a dry, hot and sandy stretch of land. It has very little vegetation. To the south of northern plains lies the Peninsular plateau. It is triangular in shape. The relief is highly uneven.

This is a region with numerous hill ranges and valleys. Aravali hills, one of the oldest ranges of the world, border it on the north-west side. The Vindhyas and the Satpuras are the important ranges. The rivers Narmada and Tapi flow through these ranges. These are west flowing rivers that drain into the Arabian Sea. The Western Ghats or Sahyadris border the plateau in the west and the Eastern Ghats provide the eastern boundary. While the Western Ghats are almost continuous, the Eastern Ghats are broken and uneven. The plateau is rich in minerals like coal and iron-ore. To the west of the Western Ghats and the east of Eastern Ghats lie the coastal plains. The western coastal plains are very narrow. The eastern coastal plains are much broader.

There are a number of east flowing rivers. The rivers Mahanadi, Godavari, Krishna and Kaveri drain into the Bay of Bengal. These rivers have formed fertile deltas at their mouth. The Sunderban delta is formed where the Ganga and Brahmaputra flow into the Bay of Bengal. Two groups of islands also form part of India. Lakshadweep Islands are located in the Arabian Sea. These are coral islands located off the coast of Kerala. The Andaman and the Nicobar Islands lie to the southeast of the Indian mainland in the Bay of Bengal. Tsunami is a huge sea wave generated due to an earthquake on the sea floor.

Q.1. The Himalaya is located in which direction?

- (a) East (b) West (c) North (d) South

163. Where does the peninsular plateau lie?

- (a) In the eastern part of India (b) In the western part of India
(c) In the northern part of India (d) In the southern part of India

164. Where do the rivers Mahanadi, Godavari, Krishna and Kaveri drain?

- (a) Western Ghats (b) Lakshadweep (c) Bay of Bengal (d) None of these

165. Aravalli hill is located in which state?

- (a) Rajasthan (b) Maharashtra (c) Tamil Nadu (d) None of these

Ans. : 1.C. North

Explanation.

The Himalayas are located in the north and northeast of India.

2.D. In the southern part of India

Explanation.

It is also called as Indian Peninsular plateau, is a flat tableland in the southern part of India.

3.C. Bay of Bengal

Explanation.

These are east flowing rivers in India that drain into the Bay of Bengal.

4.A. Rajasthan

Explanation.

The Aravalli range is a mountain range that runs through the states of Rajasthan, Haryana and Gujarat.

* Match the following.

[25]

166. List I	List II
A. Mountains	1. Landform with a flat surface that rises above the surrounding land
B. Plateaus	2. Low-lying landform, often fertile and suitable for agriculture
C. Plains	3. Elevated landform with steep slopes and a narrow summit

Ans. :

List I	List II
A. Mountains	3. Elevated landform with steep slopes and a narrow summit
B. Plateaus	1. Landform with a flat surface that rises above the surrounding land
C. Plains	2. Low-lying landform, often fertile and suitable for agriculture

167.

List I	List II
A. Himalayas	1. Delta region known for its mangrove forests
B. Western Ghats	2. Ancient fold mountains in North-West India
C. Indo-Gangetic Plains	3. Mountain range running parallel to the western coast of India
D. Sundarbans	4. Fertile plain formed by major Indian rivers
E. Aravalli Range	5. Young fold mountains in northern India

Ans. :

List I	List II
A. Himalayas	5. Young fold mountains in northern India
B. Western Ghats	3. Mountain range running parallel to the western coast of India
C. Indo-Gangetic Plains	4. Fertile plain formed by major Indian rivers
D. Sundarbans	1. Delta region known for its mangrove forests
E. Aravalli Range	2. Ancient fold mountains in North-West India

168. Match words in pairs :

Mount Everest	Africa
rafting	roof of the world
camels	rice fields
plateau	desert
Gangetic plains	river
waterway	Ganga
Mount Kilimanjaro	tributary
Yamuna	climbing

Ans. :

Mount Everest	climbing
rafting	river
camels	desert
plateau	roof of the world
Gangetic plains	rice fields
waterway	Ganga
Mount Kilimanjaro	Africa
Yamuna	Tributary

Column A	Column B
169. Mount Everest	(a) Andes
170. Anamudi	(b) Africa
171. Mount Aconcagua	(c) South India
172. Mount Kilimanjaro	(d) Alps
173. Mont Blanc	(e) Himalayas

Ans. :

Column A	Column B
1. Mount Everest	(e) Himalayas
2. Anamudi	(c) South India
3. Mount Aconcagua	(a) Andes
4. Mount Kilimanjaro	(b) Africa
5. Mont Blanc	(d) Alps

Column A	Column B
174. Deccan plateau	(i) Meghalaya
175. African Plateau	(ii) Confluence
176. Victoria Falls	(iii) Gold and diamond mining
177. Cherrapunji plateau	(iv) Volcanic activity
178. The meeting point of two or more rivers	(v) Zambezi river

Ans. :

Column A	Column B
(1) Deccan plateau	(iv) Volcanic activity
(2) African Plateau	(iii) Gold and diamond mining
(3) Victoria Falls	(v) Zambezi river
(4) Cherrapunji plateau	(i) Meghalaya
(5) The meeting point of two or more rivers	(ii) Confluence

